

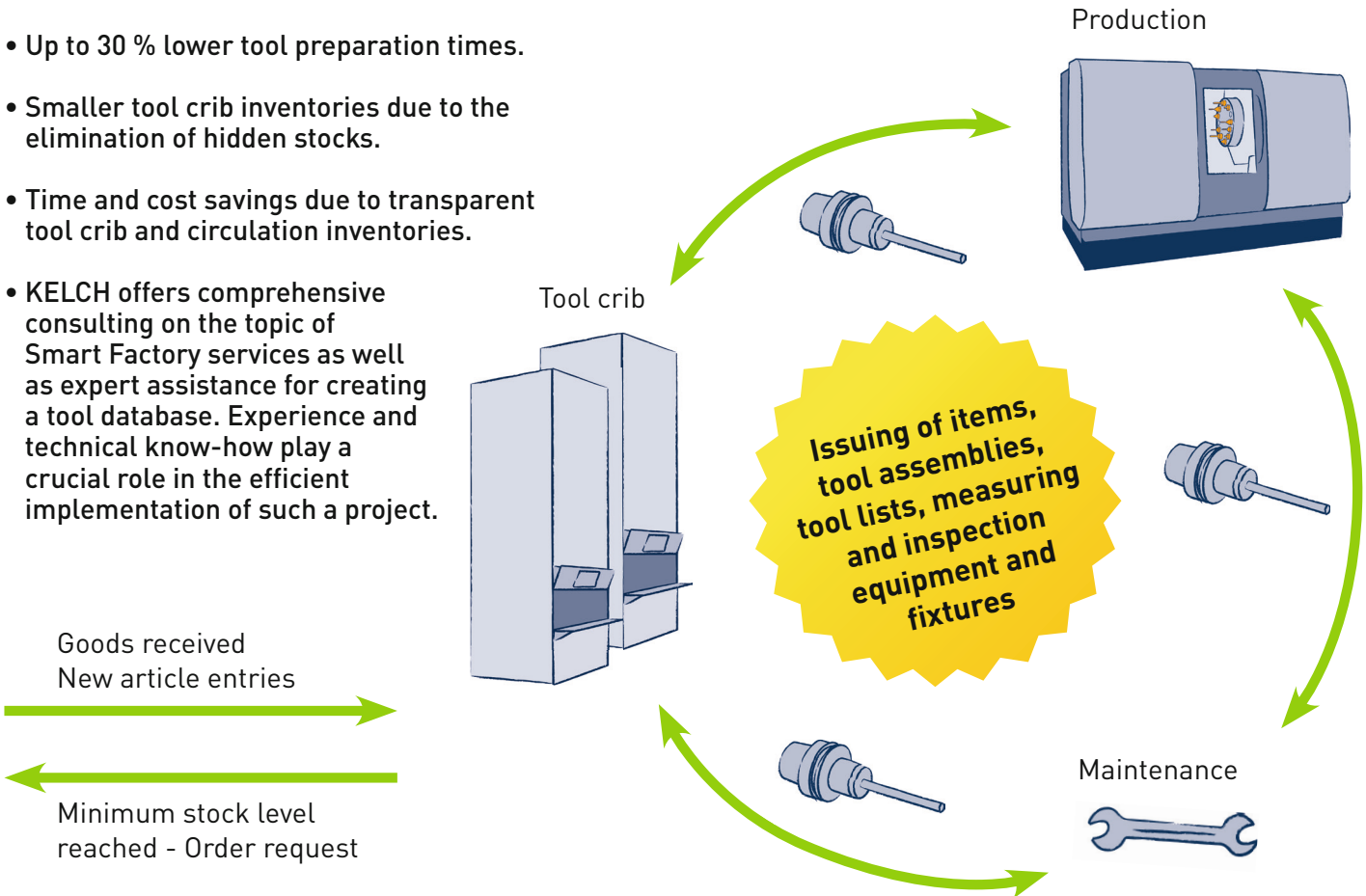
TDM Tool Crib Module

The right tool at the right place at the right time

KELCH

The benefits for you:

- Lower storage costs due to automatic minimum stock level notifications and transparent tool crib controlling.
- Up to 30 % lower tool preparation times.
- Smaller tool crib inventories due to the elimination of hidden stocks.
- Time and cost savings due to transparent tool crib and circulation inventories.
- KELCH offers comprehensive consulting on the topic of Smart Factory services as well as expert assistance for creating a tool database. Experience and technical know-how play a crucial role in the efficient implementation of such a project.



In conjunction with TDM Systems GmbH,
Competence in Tool Data Management

tdmsystems

www.tdmsystems.com

The TDM Tool Crib Module organizes items and tool assemblies.

The TDM Tool Crib Module organizes items and tool assemblies according to stock level and tool crib location, taking the current location of the tool into account. This makes your tool

organization transparent and efficient.

The TDM Tool Crib Module allows you to create flexible tool crib structures, since it can manage both manual and automated storage systems.

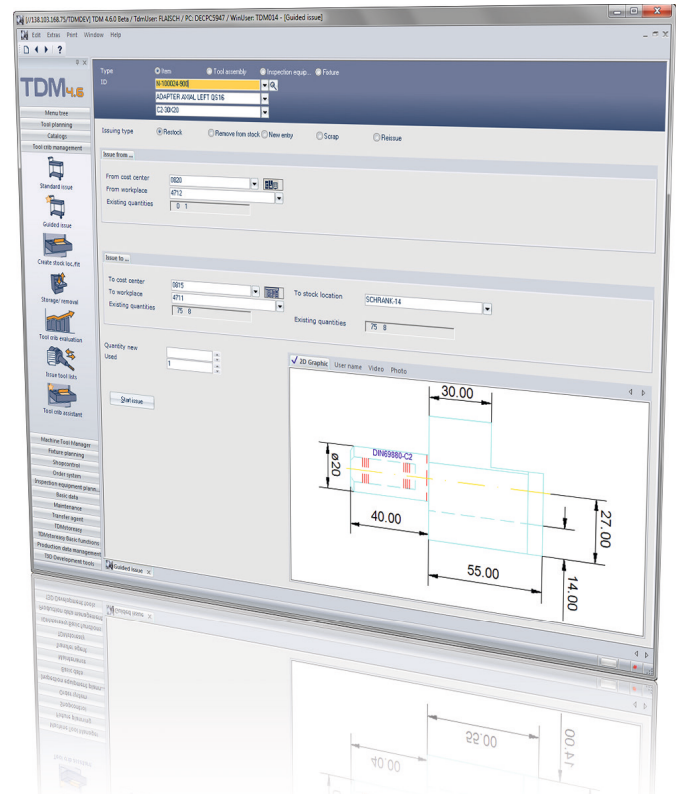
TDM Tool Crib Module

The right tool at the right place at the right time



Features at a glance

- Variable configuration of tool crib and cost center structures.
- Issuing functions for new entries and for tool movements between the crib, manufacturing cost centers and maintenance as well as scrapping with cause indications.
- Issuing items, assemblies and tool lists.
- The Tool Crib Module facilitates links to storage systems or vending machines.
- Consideration of new and used articles as well as articles being repaired.
- Tool crib access: options to integrate with identification systems such as barcodes or chips.



- Transparent tool crib controlling through the creation of statistics:
 - Tool crib and circulation inventories, including features for time and costs
 - Tool use by cost centers
 - Usage and frequency of use of items and assemblies
 - Automatic minimum stock level notifications

A basis for reordering (Ordering Module).
Optional connection to ERP systems.

In conjunction with TDM Systems GmbH,
Competence in Tool Data Management

tdmsystems
www.tdmsystems.com